

# Care and Feeding of Telex Radio Dispatch Systems IP-223

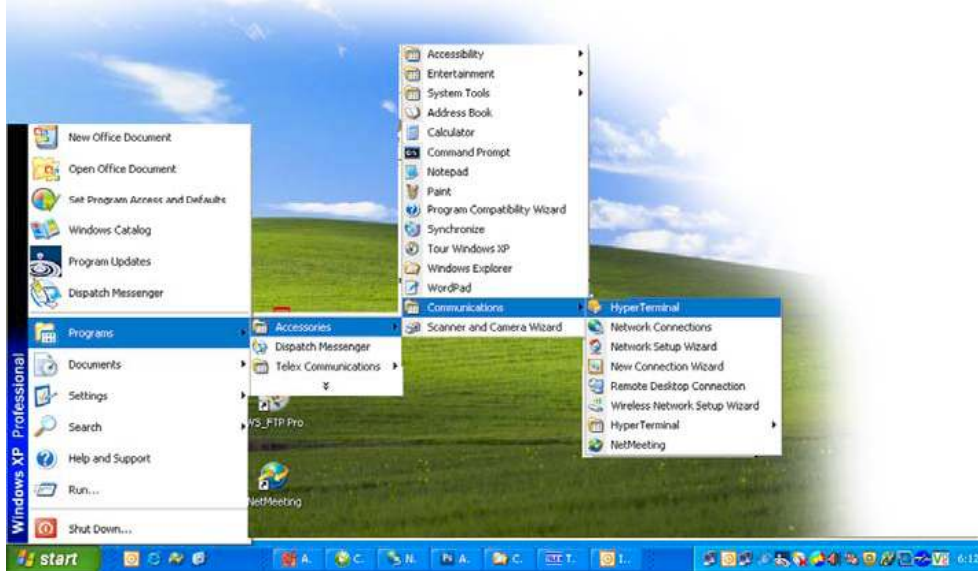
## Using HyperTerminal to reset all settings in an IP-223

**NOTE: J35 must be in the A position.**

To **assign the IP Address and Network Mask using HyperTerminal**, do the following:

1. Connect the **IP-223** to your PC using a DB-9 serial cable.
2. From the Start menu on the computer, open the HyperTerminal Application.  
(Start|Programs|Accessories|Communications|HyperTerminal).

*The HyperTerminal and Connection Description windows appear.*



3. In the Name field, enter **com**.



4. Click **OK**.

# Care and Feeding of Telex Radio Dispatch Systems

## IP-223

*The Connect To window appears.*



5. From the Connect Using drop down menu, select **COM1**.

6. Click **OK**.

*The Com1 Properties window appears.*



7. From the Bits per second drop down menu, select **19200**.

8. From the Flow Control drop down menu, select **None**

**NOTE:** These parameters may be different than the defaults depending on the selected Serial Port Parameters.

9. Click **OK**.

# Care and Feeding of Telex Radio Dispatch Systems IP-223

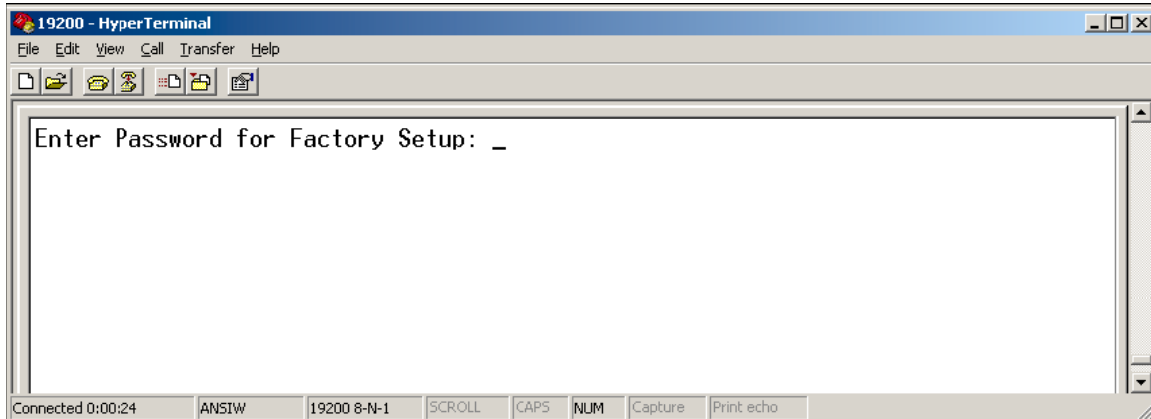
The Main HyperTerminal window appears.

10. In the main **HyperTerminal** window, enter an uppercase **S**.

11. Press **ENTER**.

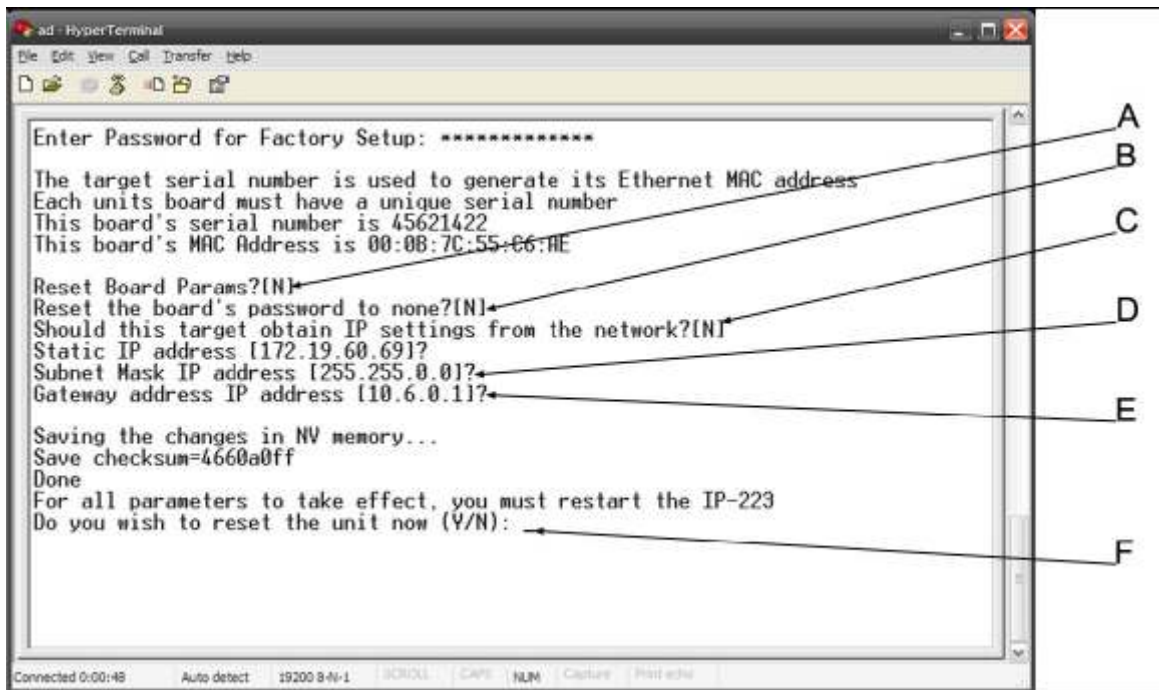
*Enter Password for Factory Setup* appears.

12. Enter **technobabble** for the factory setup password.



13. Press **ENTER**.

*The serial port access window appears.*



See next page for more detail.

# Care and Feeding of Telex Radio Dispatch Systems

## IP-223

The following is a brief explanation of the factory setup options shown:

- A* - Provides the ability to reset (back to defaults) the Board Parameters
- B* - Allows access to the password if it is new or forgotten.
- C* - Allows the unit to get an IP Address via DHCP, or to manually set the IP Address.
- D* - Allows the Subnet Mask to be manually entered or changed.
- E* - Allows the Gateway Address to be manually entered or changed.
- F* - Provides the ability to reset the unit.

14. When “Reset the Board’s Parameters” appears, type **Y** to reset the board’s parameters, otherwise, type **N**.

15. Press **Enter**.

**At this point the board parameters have been reset. If there are no additional adjustments to be made, accept the defaults and enter “Y” for “Do you wish to reset the unit now?”**

16. When “Reset the Board’s password to None” appears, type **Y** to reset the board’s password number to none, otherwise, type **N**.

17. Press **Enter**.

18. When “Should this target obtain IP settings from the network” appears, type **Y** to obtain the IP settings from the network, otherwise, type **N**.

19. Press **Enter**.

20. When “Static IP Address” appears, enter the **IP Address** of the IP-223, if necessary.

21. Press **Enter**.

22. When “Subnet Mask IP Address” appears, enter the **Subnet Mask** IP Address, if necessary.

23. Press **Enter**.

24. When “Gateway address IP Address” appears, enter the **Gateway** IP Address, if necessary.

25. Press **Enter**.

26. When “Do you wish to reset the unit now” appears, type **Y** if changes were made on the window, otherwise enter an **N**.

27. If changes were made on the window, press **ENTER** to reset the IP-223, otherwise proceed to the next step.

*The changes made are saved to memory.*

28. Close the **HyperTerminal** program.